

VIRGINIA HOMES

MANUFACTURING CORPORATION

COLLECTION OF HOMES



VIRGINIA HOMES MFG.

P.O. BOX 410

BOYDTON, VA 23917

(434) 738-6107

WWW.VIRGINIAHOMESMFG.COM

STANDARD FEATURES OF VIRGINIA HOMES

Insulation – Requirements may Vary by Location

- R-15 Exterior Walls
- R-19 Floors
- R-38 Ceiling
- Air Infiltration Wrap

Roof

- 30 Year Architectural Style Roofing Shingles
- 30# Felt Underlayment and Ridge Vent
- 7/12 Roof Pitch on Ranches
- 12/12 Roof Pitch on Capes and Saltboxes
- 7/12 or 12/12 Roof Pitch on Two Stories (depending on model)
- Roof Rafters 16" o.c. with 7/16" OSB Sheathing
- 16" Overhang on Front and Rear for 5/12 and 7/12 Pitch Roofs
- 14" Overhang on Front and Rear 9/12 Pitch Roofs
- 8" Overhang on Front and Rear 12/12 Pitch Roofs
- 12" Overhang on Gable Ends (all models)
- Pull down attic stairs on 7/12 and 9/12 Pitch Roofs

Exterior Walls

- Premium Vinyl Siding - .044" thickness, Double Traditional Lap or Double Dutchlap
- 15 inch Raised Panel Shutters – Front and Sides
- 7/16" Structural OSB Sheathing
- 2x4 Wall Studs, 16" o.c.
- Double 2x4 Top and Single 2x4 Bottom Plate
- Vented Soffit, 6" Metal Fascia

Interior Walls and Ceiling

- 2x4 Interior Walls, 16" o.c.
- 2x4 Marriage Walls, 16" o.c.
- 8 Foot Ceiling Height
- ½" Drywall – Smooth Finish Walls with 2 Coats of Paint

Exterior Doors and Windows

- 36" Insulated 6 Panel Fiberglass Front Door with Metal Threshold
- 32" Insulated 9 Lite Rear Door "No Rot" Bottom of Door Jams
- Double Hung, Tilt Sash, Low "E" Insulated Glass White Vinyl Windows
- Dead Bolt Lock– Front and Rear Doors

Interior Doors and Trim

- Pre-Painted White 6 Panel Interior Doors
- Pre-Painted White Window Casing
- Pre-Painted Floor and Ceiling Moldings
- Satin Nickel Hardware
- White Epoxy Coated Wire Closet Shelves and Rods
- Privacy Locks on Bathrooms and Bedrooms
- Door Stops
- Three Butt Hinges on All Interior Doors

Floors

- 2x10 Floor Joists, 16" o.c.
- Finished Space - 23/32" Tongue and Groove OSB Single Layer Floor-Glued and Fastened
- Second Floor of Cape Cod and Salt Box Unfinished Space – 19/32" OSB

Electrical

- 200 AMP Service with Circuit Breakers
- Exterior Door Lights
- Door Chime at Front Door
- 2 Telephone Jacks
- 2 Cable TV Jacks
- Wired for Ceiling Light in Dining Room with Dimmer Switch
- Wired and Braced for Ceiling Fan and Light in Living Room and Bedrooms
- Light Fixtures for Halls, Utility Room and Walk-in Closets
- Automatic Smoke Detectors Interconnected with Battery Backup
- 110 Volt Washer Receptacle
- Electrical Wired per National Electric Code
- Ground Fault Circuit Interrupters for External Receptacles and Bath and Kitchens
- 2 Weatherproof Outside Receptacles
- Dimmer Switch for Dining Room Light
- Boots and Registers for HVAC
- 8 Wire Thermostat

STANDARD FEATURES OF VIRGINIA HOMES

Floor Covering

- 16" Vinyl Floor Tile
- 24 oz. Shaw Carpet with 7/16" (6 lb. density) pad

Plumbing

- 40 Gallon Electric Water Heater - Double Element
- Water Shut-Off for All Fixtures
- Washer Plumbing
- Whole House Water Shut-Off
- PVC Drain Lines
- 2 Outside Freezeless Water Faucets
- Plumb For Dishwasher
- Plumb for Icemaker

Baths

- Custom Built Oak Vanities with Nickel Hardware
- Drawers in Vanities 36" and Larger
- 60" One-Piece Fiberglass Tub
- One-Piece Fiberglass Shower or Garden Tub (specified on select models)
- Single Lever Delta Anti-Scald Faucets and Pressure Balanced Faucet on Shower
- Lighted Exhaust Fans
- Glass Mirror
- Wired for Light Fixture above Mirrors
- Water Saver Commode

Kitchens

- Recessed Can Lights (5) including Separately Switched Recessed Can over Kitchen Sink
- Custom Built Oak Cabinets with Nickel Hardware
- Concealed Cabinet Hinges
- 7.5" Deep Stainless Double Bowl Sink
- Drawer over Door Base Construction
- Single Lever Faucet with Sprayer Attachment
- Stainless Steel Double Bowl Sink
- Range Hood with Light (Unless Specified for Microwave)

Additions for Cape Cods

- 110 Volt Electrical Circuit to Junction Box for Future Lighting Circuit on Second Level
- Rough-in Plumbing for Future Second Floor Bath
- Carpet on Stairs to Second Floor, Oak Railings
- Engineered Rafters 16" o.c., Trusses serve as floor for second level

Additions for Traditional Two Stories and Saltboxes

- First Floor Ceiling Joist 2x6, 16" o.c.
- Second Floor - Floor Framing 2x10, 16" o.c. (Living Space on Saltboxes)
- Carpet on Stairs to Second Floor, Oak Railings

* The features above are standard in every home, but a multitude of options are available. Please contact a Virginia Homes Manufacturing representative for details.

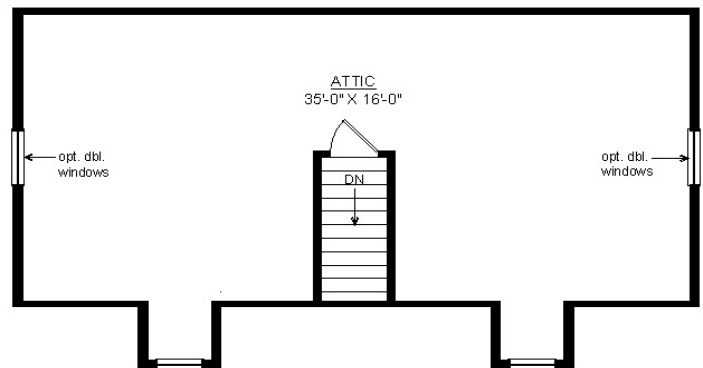
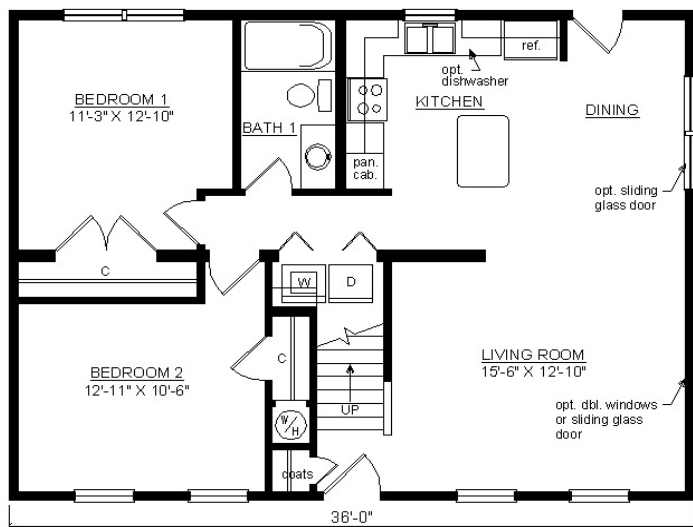
* Because of continuous product development, Virginia Homes Mfg. may change specifications and materials without notice. Square footage and dimensions are approximate. Floor plans and renderings may be shown with optional on-site built features.

SMALLWOOD CAPE



SHOWN WITH OPTIONAL ON SITE BUILT PORCH,
CRAFTSMAN DOOR AND DORMERS

984 Sq. Ft. (FINISHED) 600 Sq.Ft. (UNFINISHED) BEDROOMS: 2 BATHS: 1



SHOWN WITH OPTIONAL 6" EXTERIOR WALLS

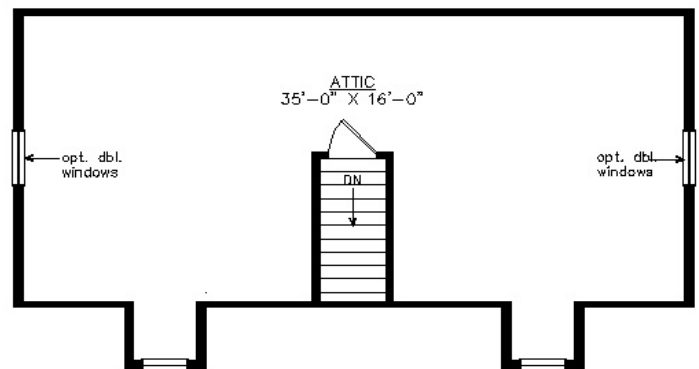
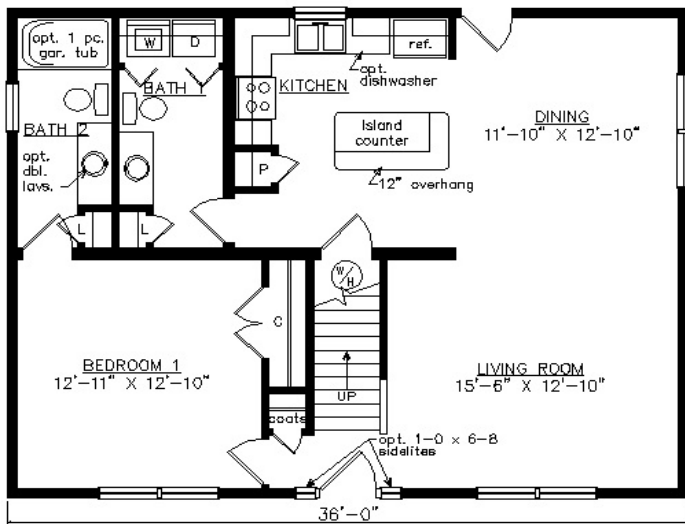
WWW.VIRGINIAHOMESMFG.COM

SHENANDOAH CAPE



SHOWN WITH OPTIONAL ON SITE BUILT PORCH,
FANLITE DOOR AND DORMERS

984 Sq. Ft. (FINISHED) 600 Sq.Ft. (UNFINISHED) BEDROOMS: 1 BATHS: 2

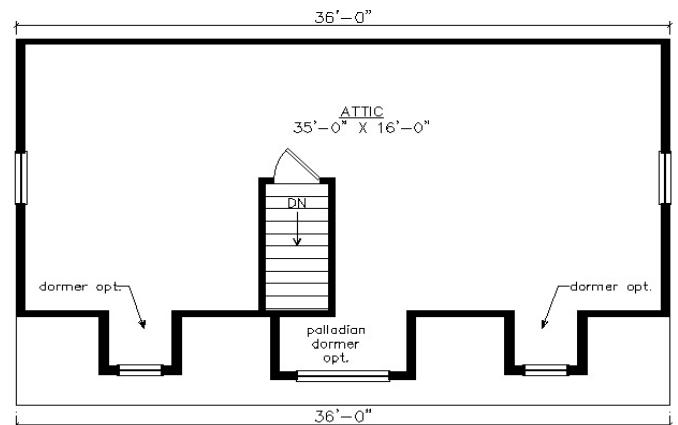
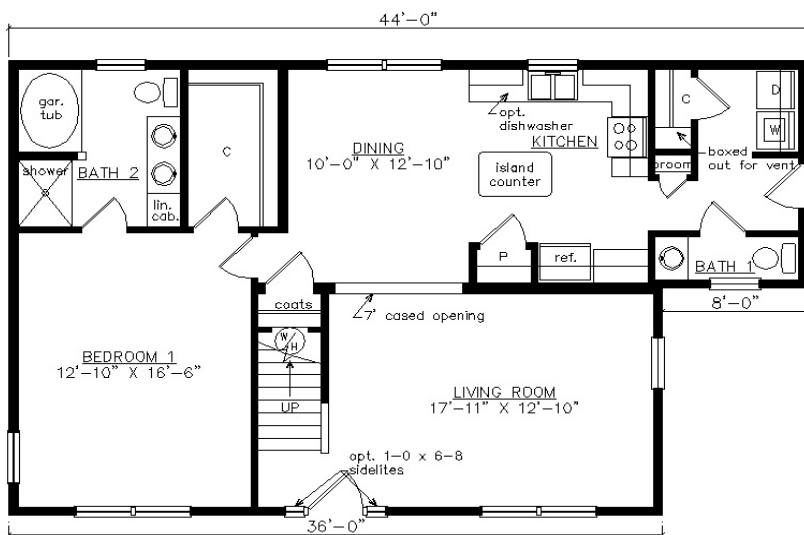


SHOWN WITH OPTIONAL 6" EXTERIOR WALLS

OXFORD CAPE



SHOWN WITH OPTIONAL ON SITE BUILT PORCH,
 FANLITE DOOR, DOOR SIDELITES AND DORMERS
 1093 Sq. Ft. (FINISHED) 640 Sq.Ft. (UNFINISHED) BEDROOMS: 1 BATHS: 1.5



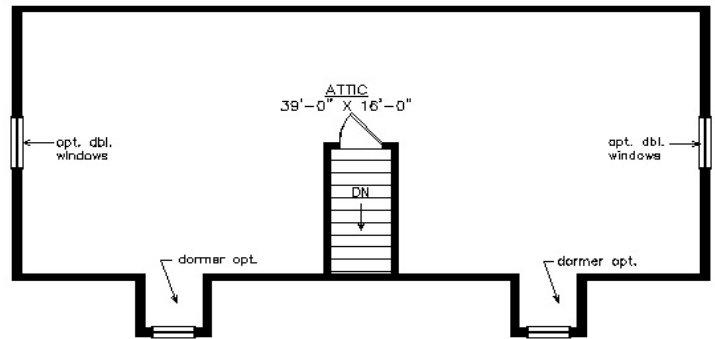
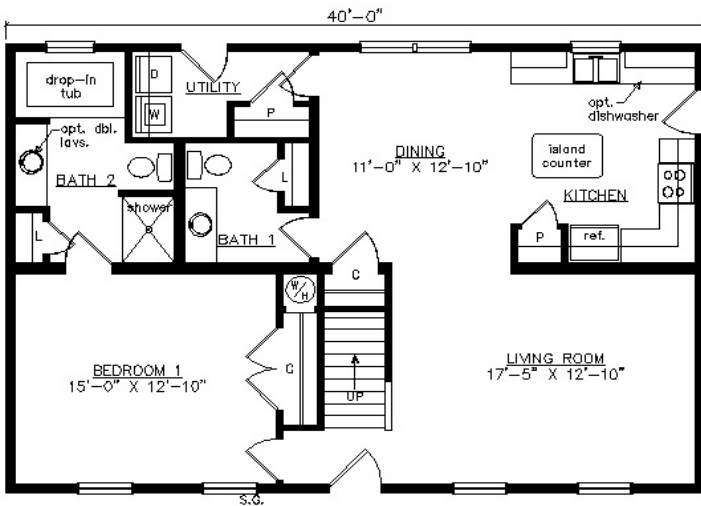
SHOWN WITH OPTIONAL 6" EXTERIOR WALLS

WEDGEPORT I CAPE



SHOWN WITH OPTIONAL ON SITE BUILT PORCH,
FANLITE DOOR AND DORMERS

1093 Sq. Ft. (FINISHED) 667 Sq.Ft. (UNFINISHED) BEDROOMS: 1 BATHS: 1.5



SHOWN WITH OPTIONAL 6" EXTERIOR WALLS

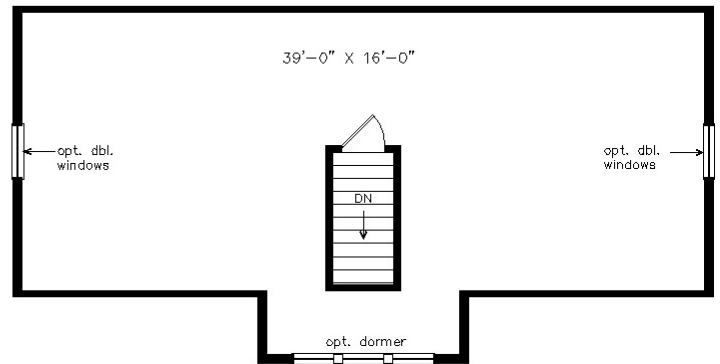
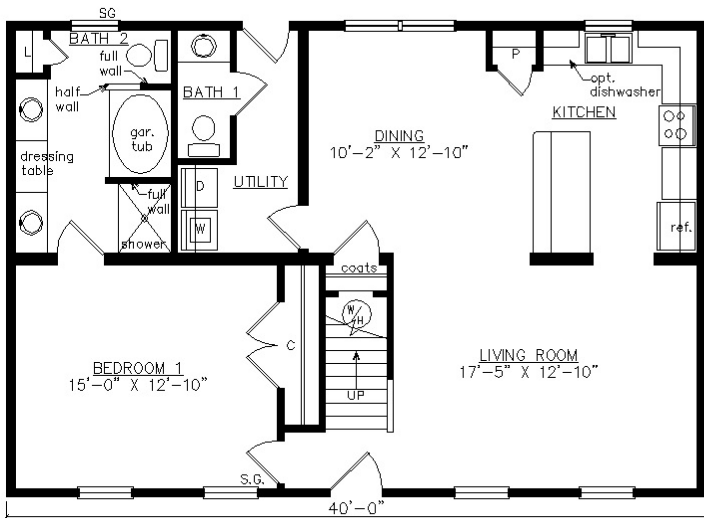
WWW.VIRGINIAHOMESMFG.COM

MIDLOTHIAN CAPE



SHOWN WITH OPTIONAL ON SITE BUILT PORCH, CRAFTSMAN WINDOWS,
CRAFTSMAN DOOR AND DORMER

1093 Sq. Ft. (FINISHED) 667 Sq.Ft. (UNFINISHED) BEDROOMS: 1 BATHS: 1.5



SHOWN WITH OPTIONAL 6" EXTERIOR WALLS

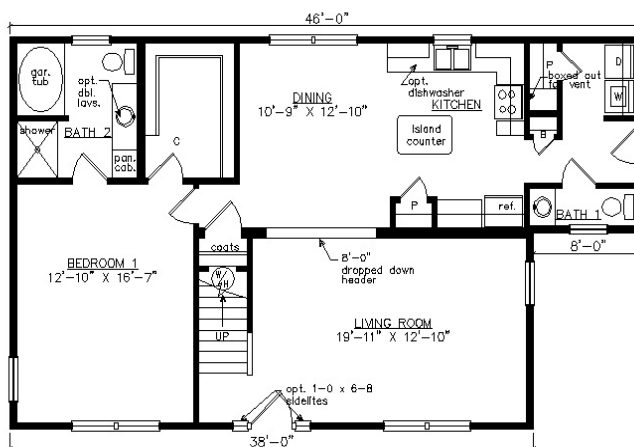
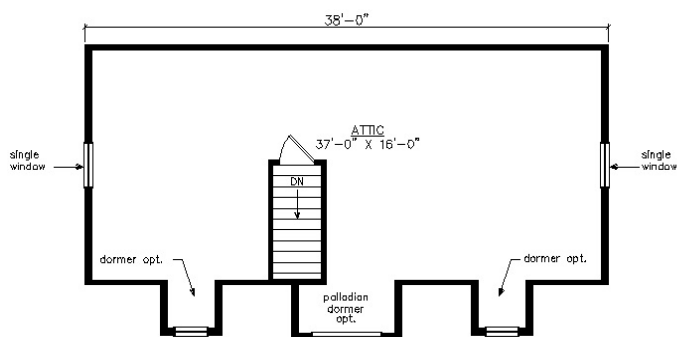
WWW.VIRGINIAHOMESMFG.COM

NORTHAMPTON CAPE



SHOWN WITH OPTIONAL ON SITE BUILT PORCH,
FANLITE DOOR, DOOR SIDELITES AND DORMERS

1147 Sq. Ft. (FINISHED) 633 Sq.Ft. (UNFINISHED) BEDROOMS: 1 BATHS: 1.5



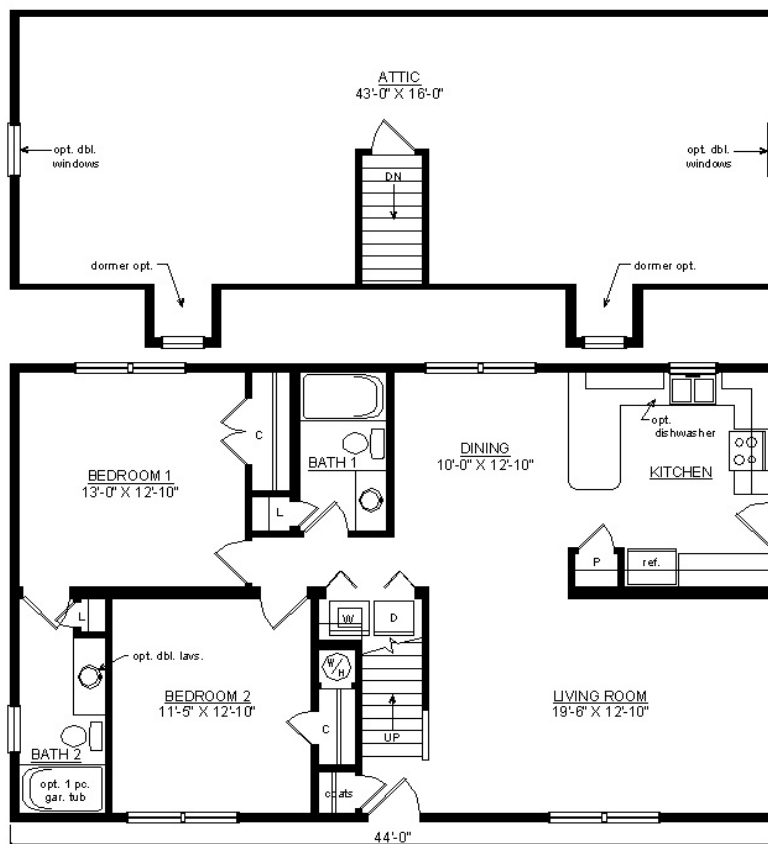
SHOWN WITH OPTIONAL
6" EXTERIOR WALLS

BAYPORT CAPE



SHOWN WITH OPTIONAL ON SITE GABLE PORCH,
FANLITE DOOR AND DORMERS

1203 Sq. Ft. (FINISHED) 733 Sq.Ft. (UNFINISHED) BEDROOMS: 2 BATHS: 2



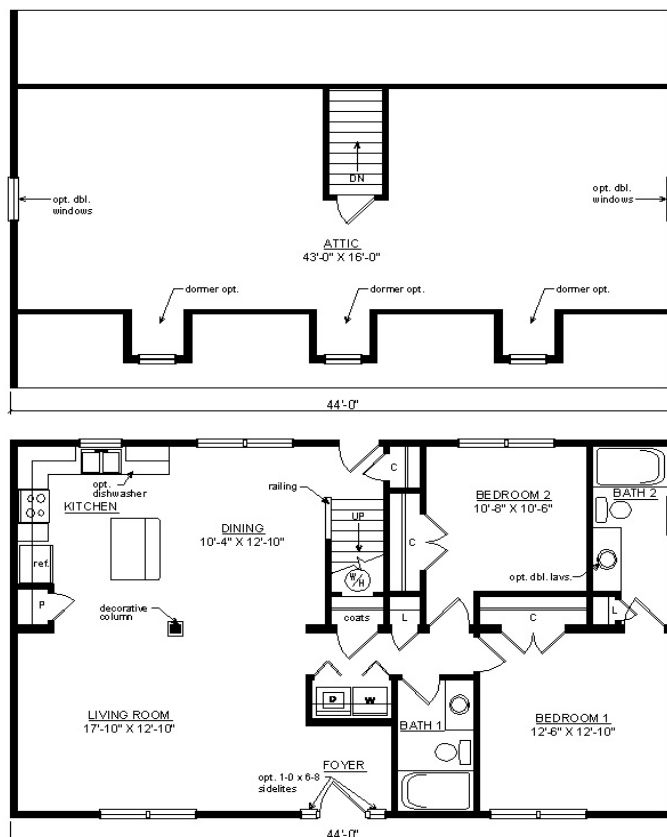
SHOWN WITH OPTIONAL
6" EXTERIOR WALLS

EASTPORT CAPE



SHOWN WITH OPTIONAL ON SITE BUILT PORCH,
FANLITE DOOR AND DORMERS

1203 Sq. Ft. (FINISHED) 730 Sq.Ft. (UNFINISHED) BEDROOMS: 2 BATHS: 2

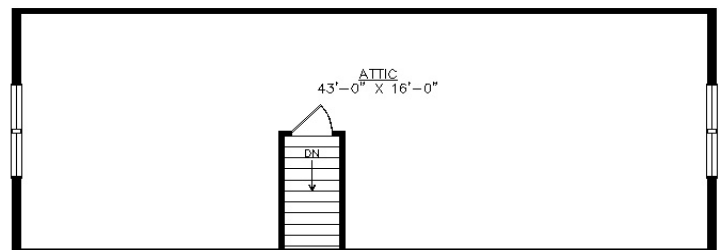
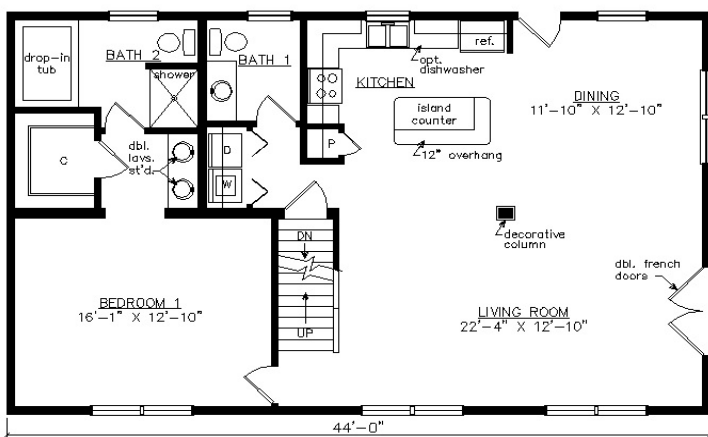


SHOWN WITH OPTIONAL 6" EXTERIOR WALLS

LEXINGTON CAPE



SHOWN WITH OPTIONAL ON SITE BUILT DECK
 1203 Sq. Ft. (FINISHED) 733 Sq.Ft. (UNFINISHED) BEDROOMS: 1 BATHS: 1.5



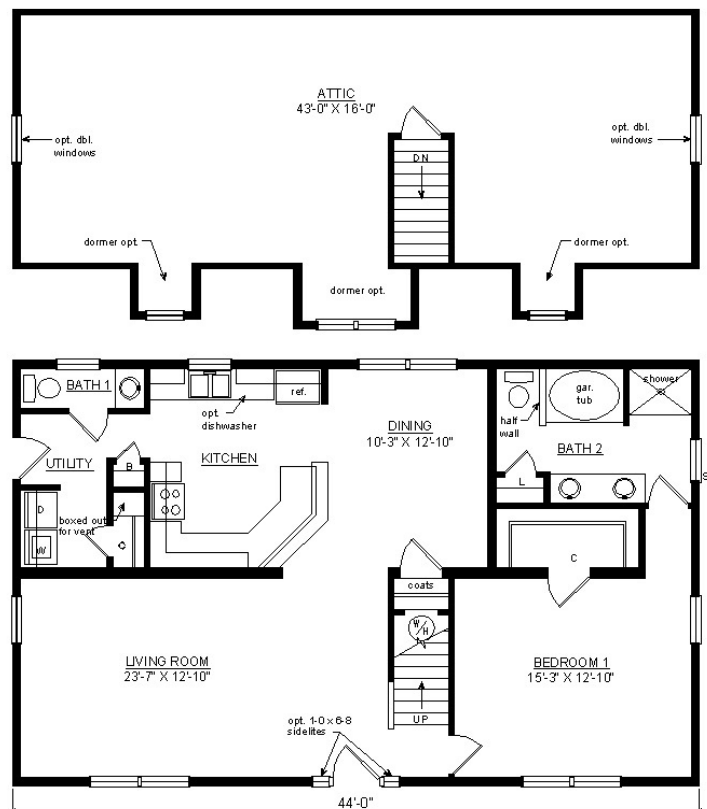
SHOWN WITH OPTIONAL 6" EXTERIOR WALLS

CHATHAM CAPE



SHOWN WITH OPTIONAL ON SITE BUILT PORCH,
FANLITE DOOR AND DORMERS

1203 Sq. Ft. (FINISHED) 733 Sq.Ft. (UNFINISHED) BEDROOMS: 1 BATHS: 1.5



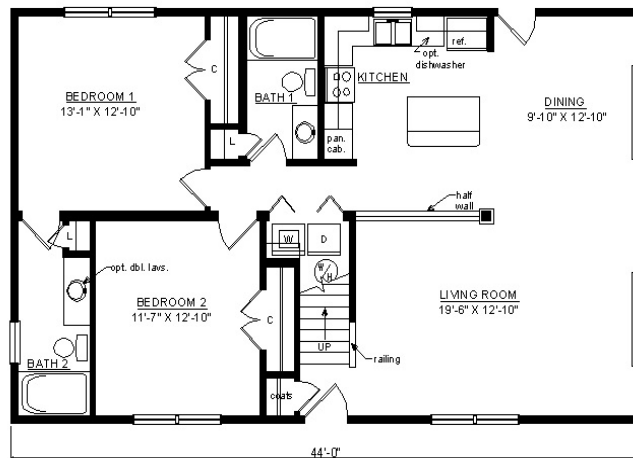
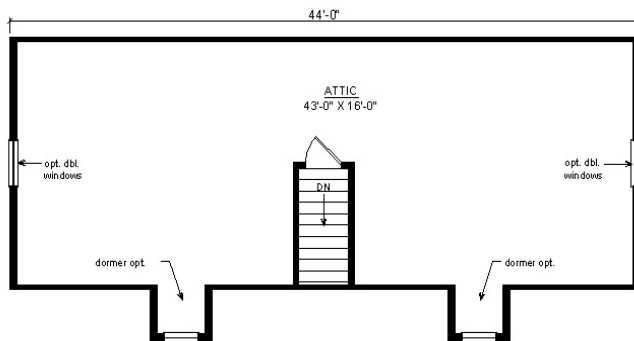
SHOWN WITH OPTIONAL 6" EXTERIOR WALLS

KINGSPORT CAPE



SHOWN WITH OPTIONAL ON SITE BUILT PORCH,
FANLITE DOOR AND DORMERS

1203 Sq. Ft. (FINISHED) 733 Sq.Ft. (UNFINISHED) BEDROOMS: 2 BATHS: 2

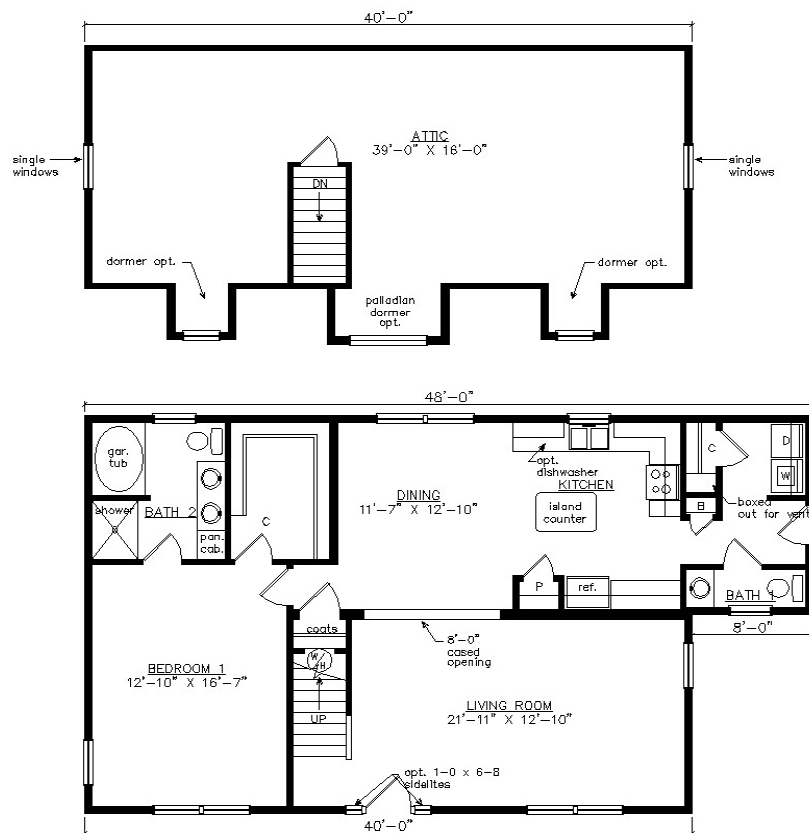


SHOWN WITH OPTIONAL
6" EXTERIOR WALLS

SOUTHAMPTON CAPE



SHOWN WITH OPTIONAL ON SITE BUILT PORCH,
 FANLITE DOOR, DOOR SIDELITES AND DORMERS
 1203 Sq. Ft. (FINISHED) 667 Sq.Ft. (UNFINISHED) BEDROOMS: 1 BATHS: 1.5

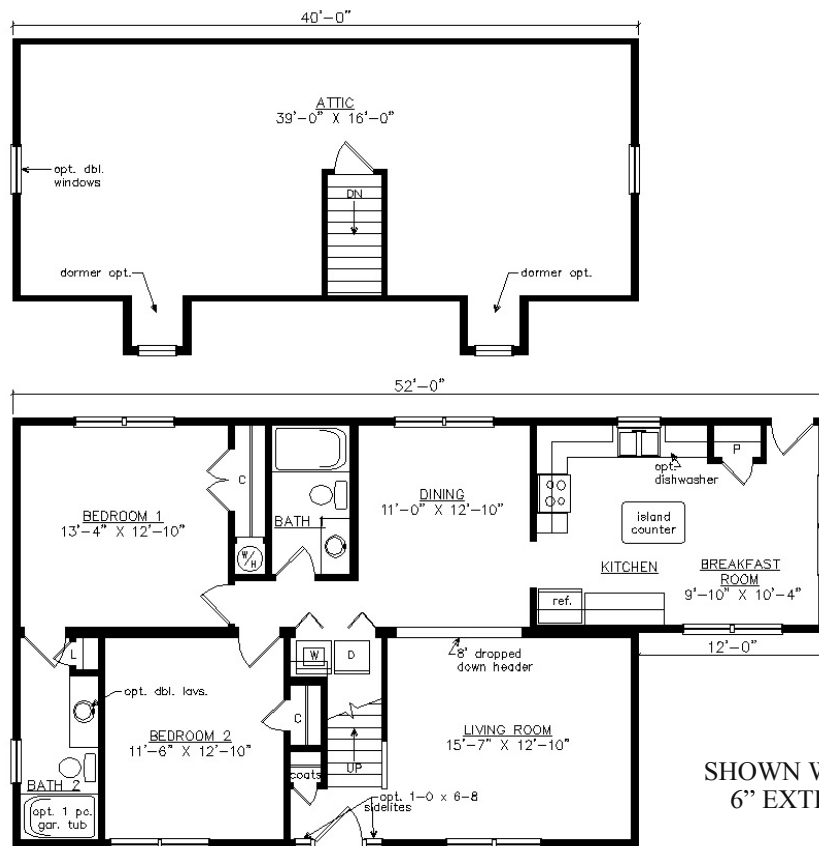


NORTHPORT CAPE



SHOWN WITH OPTIONAL ON SITE BUILT PORCH,
FANLITE DOOR, DOOR SIDELITES AND DORMERS

1257 Sq. Ft. (FINISHED) 640 Sq.Ft. (UNFINISHED) BEDROOMS: 2 BATHS: 2

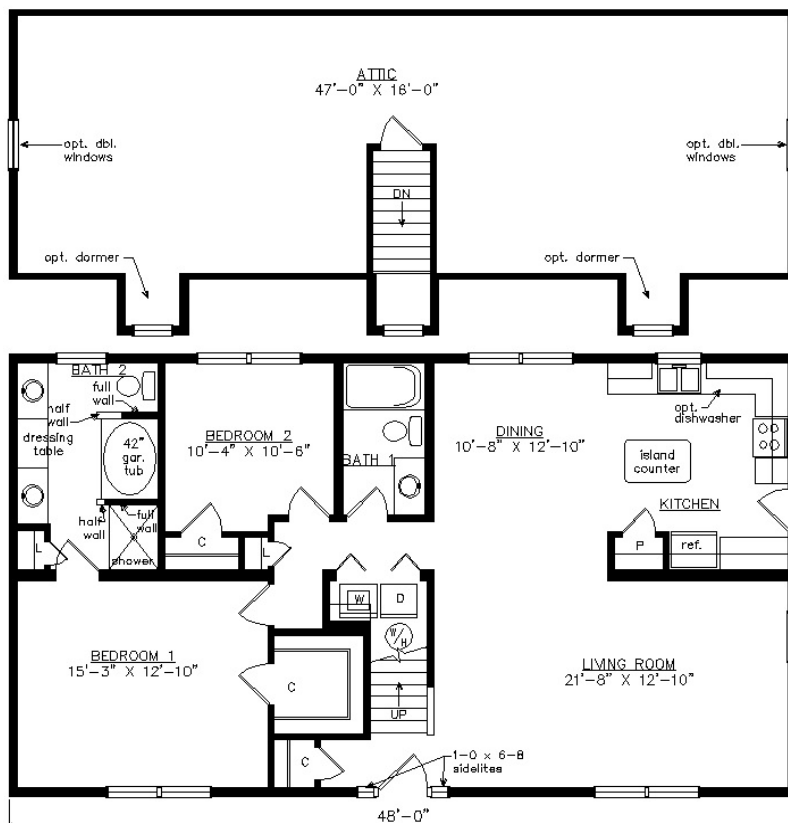


SHOWN WITH OPTIONAL
6" EXTERIOR WALLS

ROCKPORT CAPE



SHOWN WITH OPTIONAL ON SITE BUILT PORCH, TRIANGLE GABLE VENTS,
 FANLITE DOOR, DOOR SIDELITES AND DORMERS
 1312 Sq. Ft. (FINISHED) 800 Sq.Ft. (UNFINISHED) BEDROOMS: 2 BATHS: 2

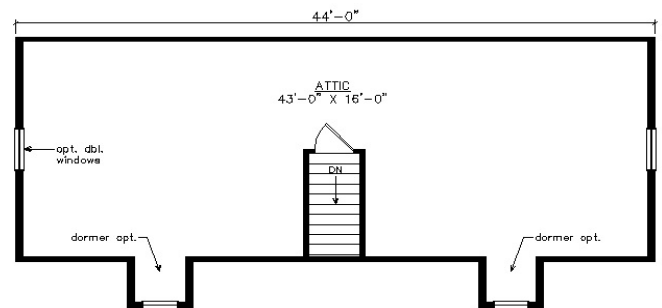
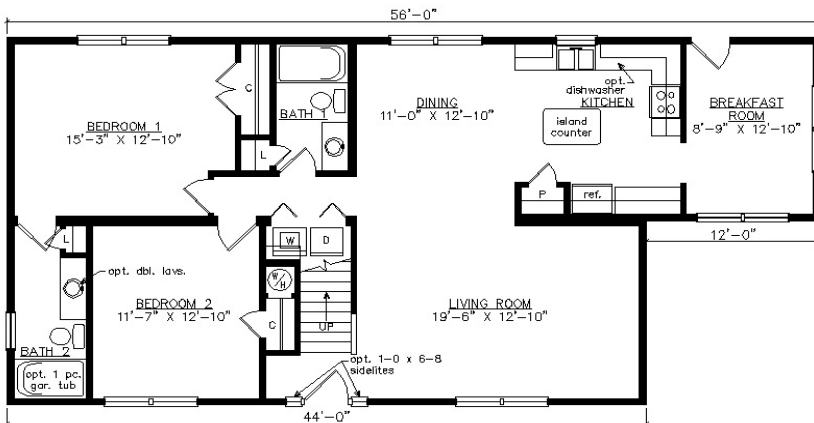


SHOWN WITH OPTIONAL
 6" EXTERIOR WALLS

NEWPORT CAPE



SHOWN WITH OPTIONAL ON SITE GABLE PORCH,
 FANLITE DOOR, ACCENT SHAKES AND DORMERS
 1367 Sq. Ft. (FINISHED) 704 Sq.Ft. (UNFINISHED) BEDROOMS: 2 BATHS: 2



SHOWN WITH OPTIONAL 6" EXTERIOR WALLS

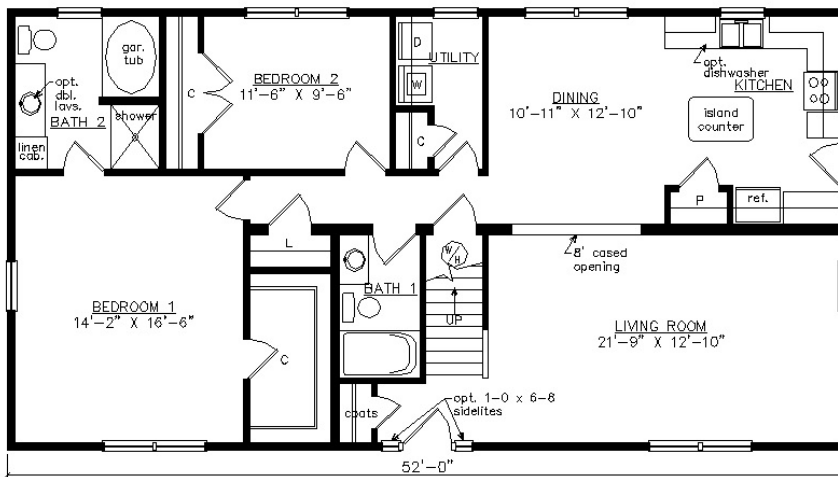
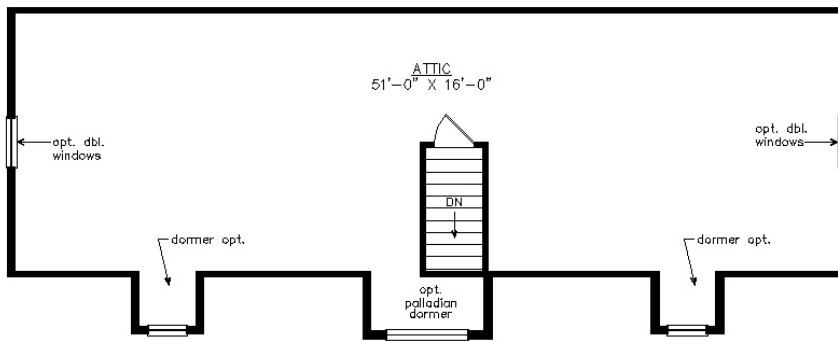
WWW.VIRGINIAHOMESMFG.COM

SOUTHPORT CAPE



SHOWN WITH OPTIONAL ON SITE PORCH,
FANLITE DOOR AND DORMERS

1421 Sq. Ft. (FINISHED) 832 Sq.Ft. (UNFINISHED) BEDROOMS: 2 BATHS: 2



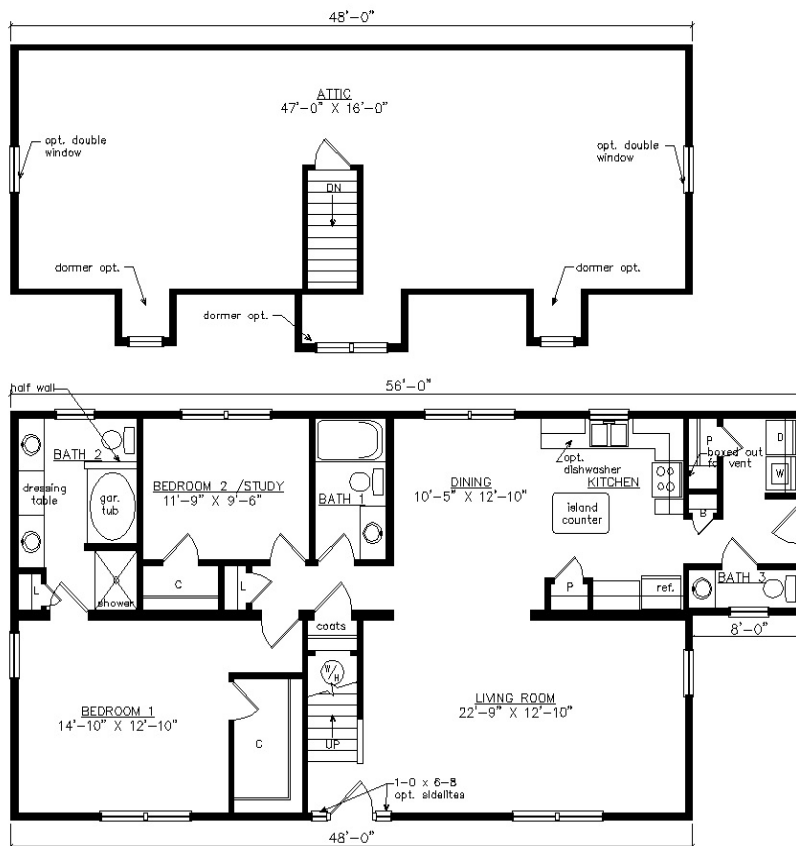
SHOWN WITH OPTIONAL
6" EXTERIOR WALLS

CAROLINA CAPE



SHOWN WITH OPTIONAL ON SITE BUILT PORCH, FAN LITE DOOR, DOOR SIDELITES AND DORMERS

1421 Sq. Ft. (FINISHED) 800 Sq.Ft. (UNFINISHED) BEDROOMS: 2 BATHS: 2.5



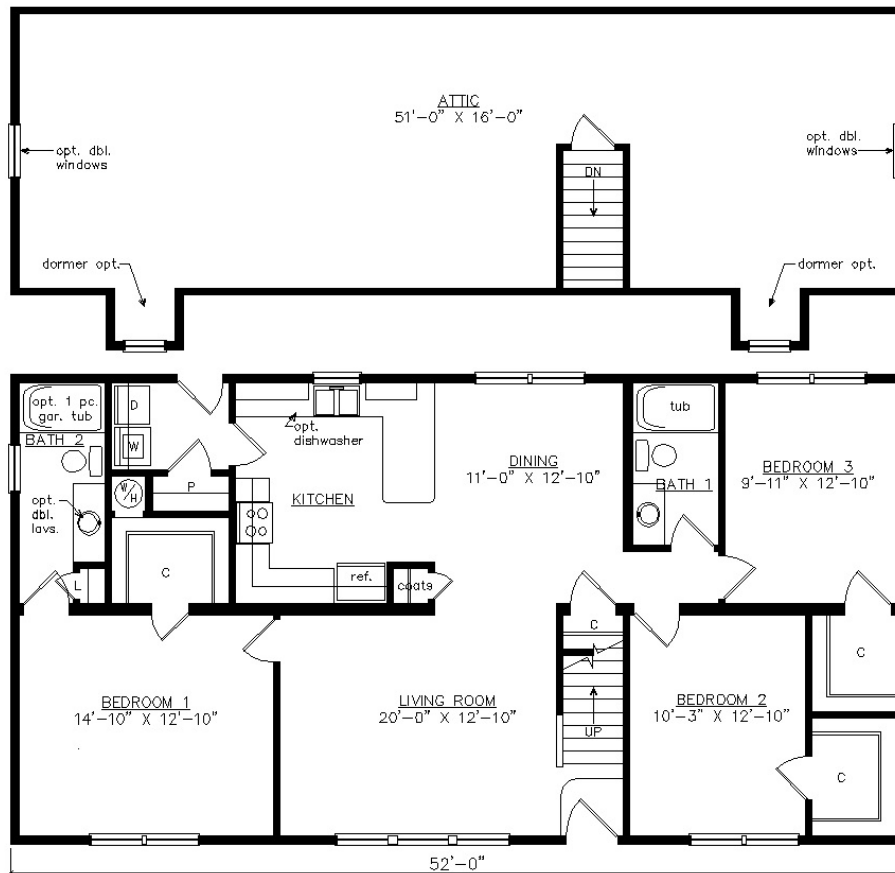
SHOWN WITH OPTIONAL 6" EXTERIOR WALLS

FIFTH AVENUE CAPE



SHOWN WITH OPTIONAL ON SITE BUILT GABLE PORCH,
FANLITE DOOR AND DORMERS

1421 Sq. Ft. (FINISHED) 832 Sq.Ft. (UNFINISHED) BEDROOMS: 3 BATHS: 2



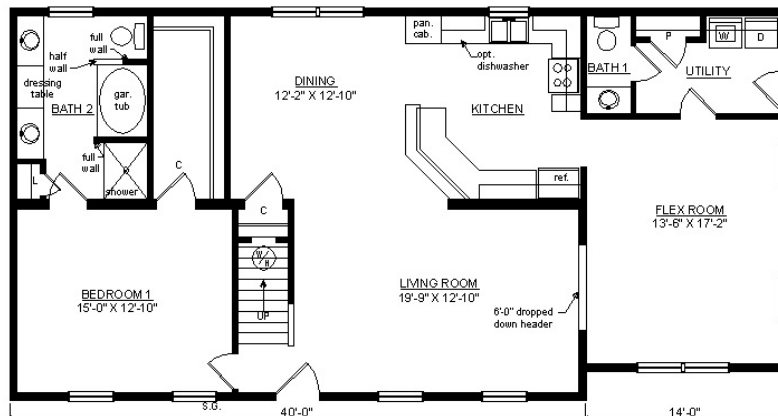
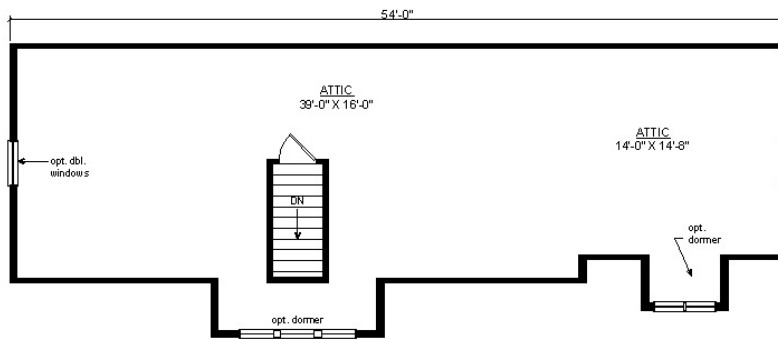
SHOWN WITH OPTIONAL
6" EXTERIOR WALLS

POWHATAN CAPE



SHOWN WITH OPTIONAL ON SITE BUILT PORCH,
CRAFTSMAN DOOR AND DORMERS

1448 Sq. Ft. (FINISHED) 877 Sq.Ft. (UNFINISHED) BEDROOMS: 1 BATHS: 1.5

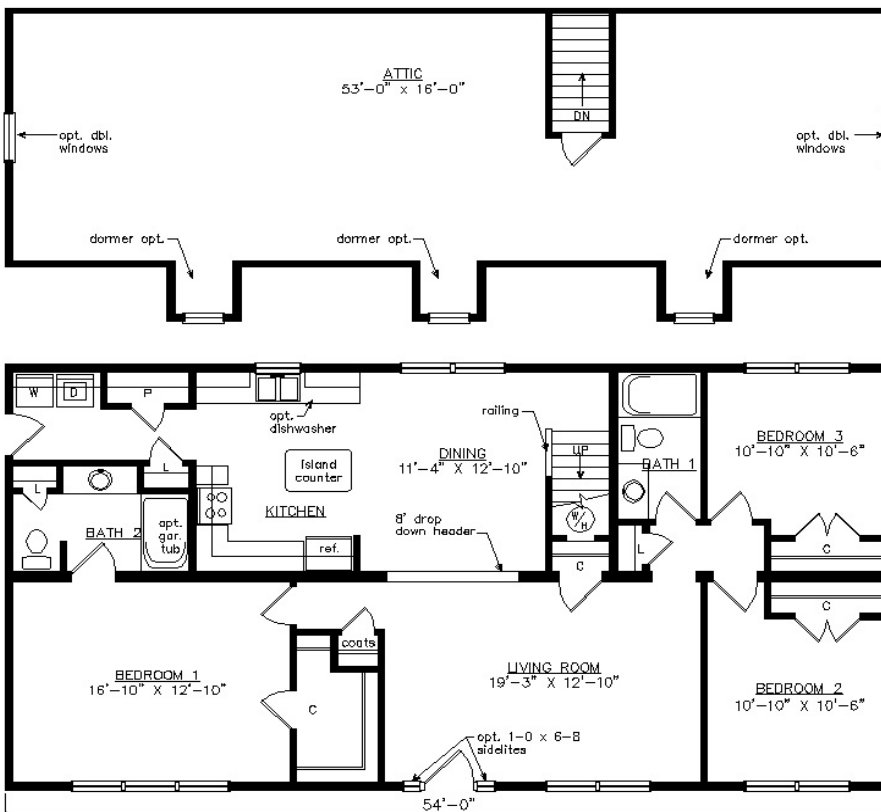


SHOWN WITH OPTIONAL 6" EXTERIOR WALLS

CAROLINE CAPE



SHOWN WITH OPTIONAL ON SITE BUILT PORCH,
 TRIANGLE GABLE VENT, FANLITE DOOR, DOOR SIDELITES AND DORMERS
 1476 Sq. Ft. (FINISHED) 896 Sq.Ft. (UNFINISHED) BEDROOMS: 3 BATHS: 2

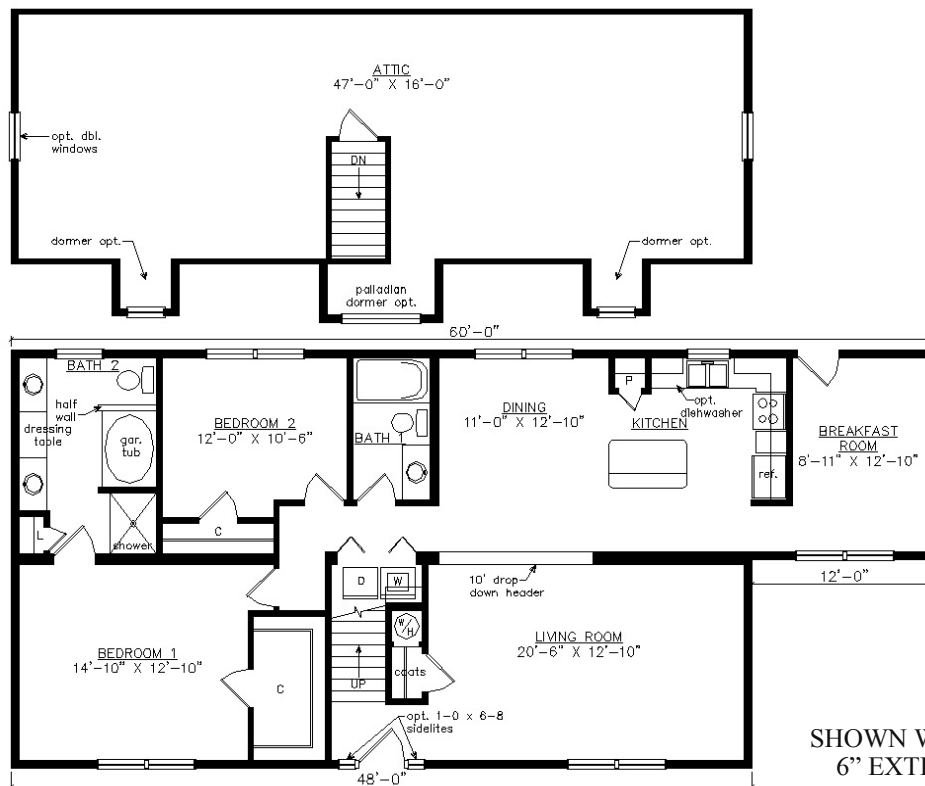


SHOWN WITH OPTIONAL
 6" EXTERIOR WALLS

JONESPORT CAPE



SHOWN WITH OPTIONAL ON SITE BUILT PORCH,
 FANLITE DOOR, DOOR SIDELITES AND DORMERS
 1476 Sq. Ft. (FINISHED) 768 Sq.Ft. (UNFINISHED) BEDROOMS: 2 BATHS: 2.5



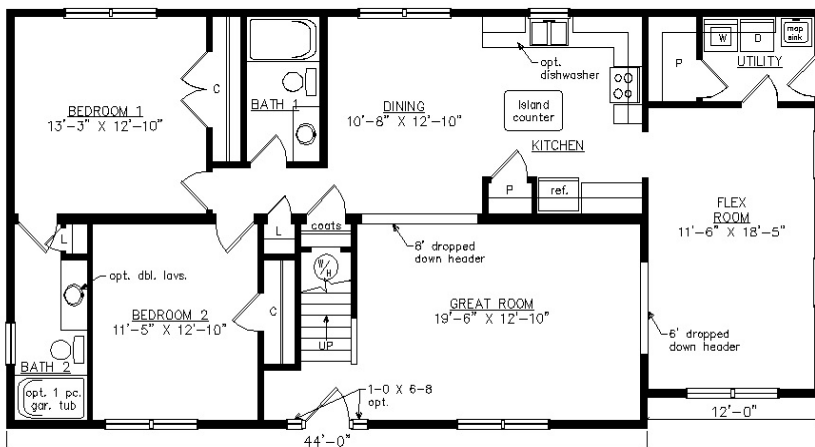
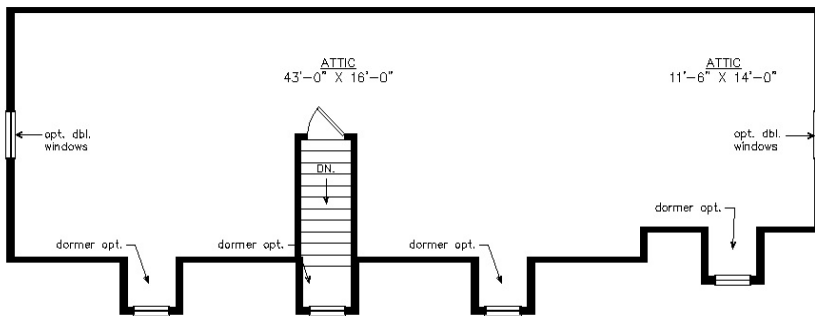
SHOWN WITH OPTIONAL
 6" EXTERIOR WALLS

NEW HARBOR CAPE



SHOWN WITH OPTIONAL ON SITE BUILT PORCH,
FANLITE DOOR, DOOR SIDELITES AND DORMERS

1507 Sq. Ft. (FINISHED) 903 Sq.Ft. (UNFINISHED) BEDROOMS: 2 BATHS: 2



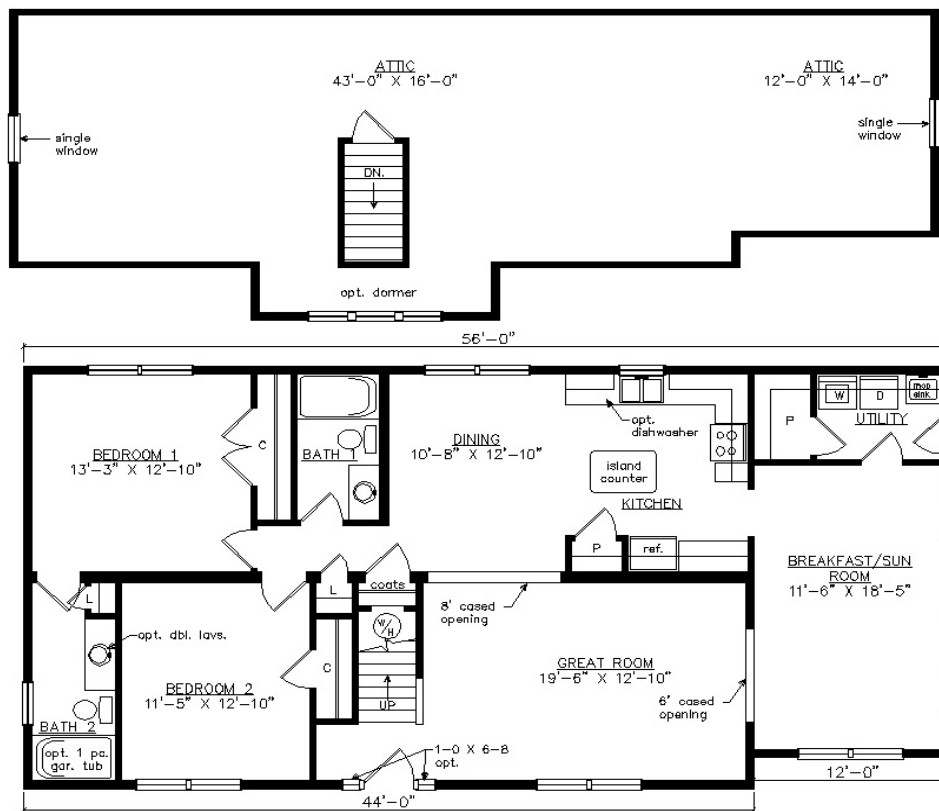
SHOWN WITH OPTIONAL
6" EXTERIOR WALLS

AMELIA CAPE



SHOWN WITH OPTIONAL ON SITE BUILT PORCH, CRAFTSMAN DOOR,
DOOR SIDELITES AND SHED DORMER

1507 Sq. Ft. (FINISHED) 909 Sq.Ft. (UNFINISHED) BEDROOMS: 2 BATHS: 2

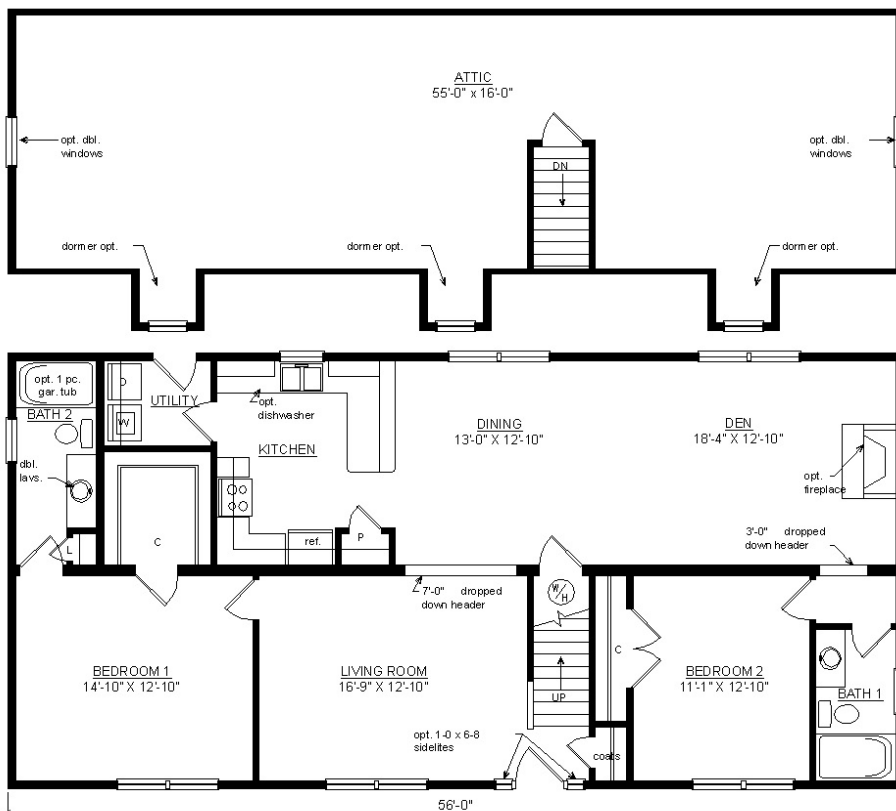


SHOWN WITH OPTIONAL
6" EXTERIOR WALLS

FREEPORT CAPE



SHOWN WITH OPTIONAL ON SITE BUILT PORCH AND DORMERS
 1531 Sq. Ft. (FINISHED) 896 Sq.Ft. (UNFINISHED) BEDROOMS: 2 BATHS: 2

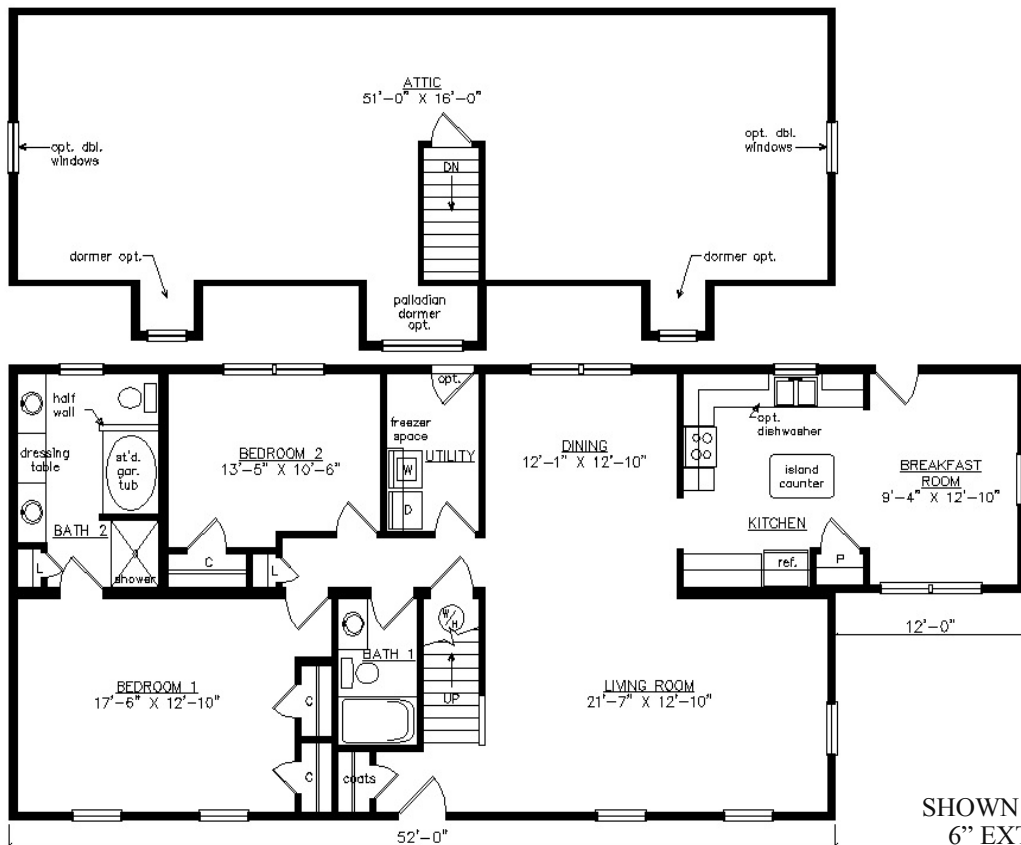


SHOWN WITH OPTIONAL
 6" EXTERIOR WALLS

WESTPORT CAPE



SHOWN WITH OPTIONAL ON SITE BUILT PORCH AND DORMERS
 1585 Sq. Ft. (FINISHED) 832 Sq.Ft. (UNFINISHED) BEDROOMS: 2 BATHS: 2



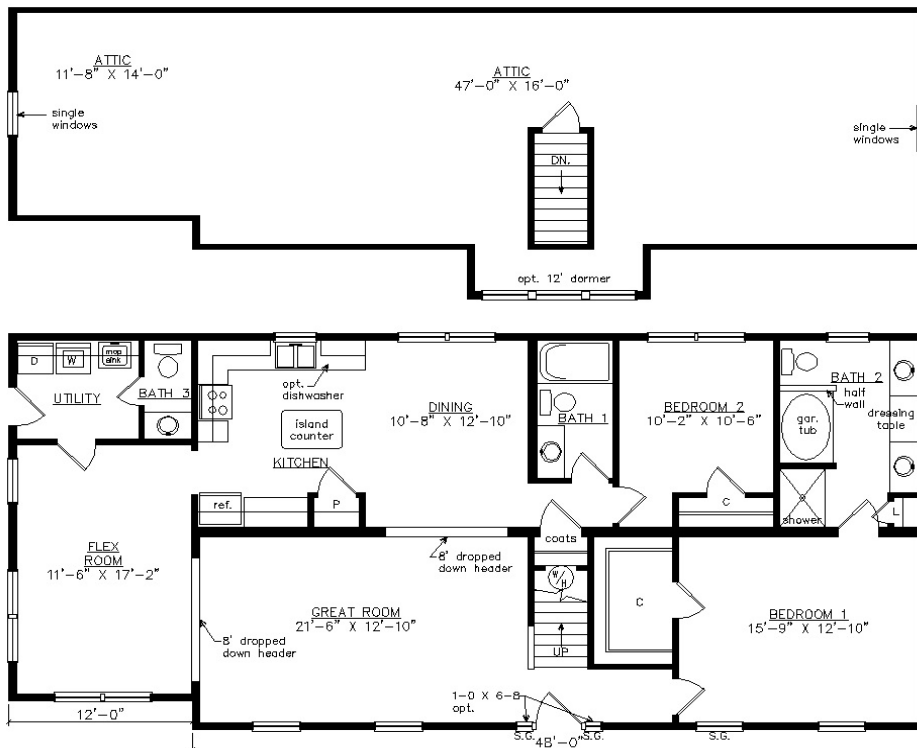
SHOWN WITH OPTIONAL
 6" EXTERIOR WALLS

GOOCHLAND CAPE



SHOWN WITH OPTIONAL ON SITE BUILT PORCH CRAFTSMAN DOOR
DOOR SIDELITES AND DORMER

1616 Sq. Ft. (FINISHED) 976 Sq.Ft. (UNFINISHED) BEDROOMS: 2 BATHS: 2.5

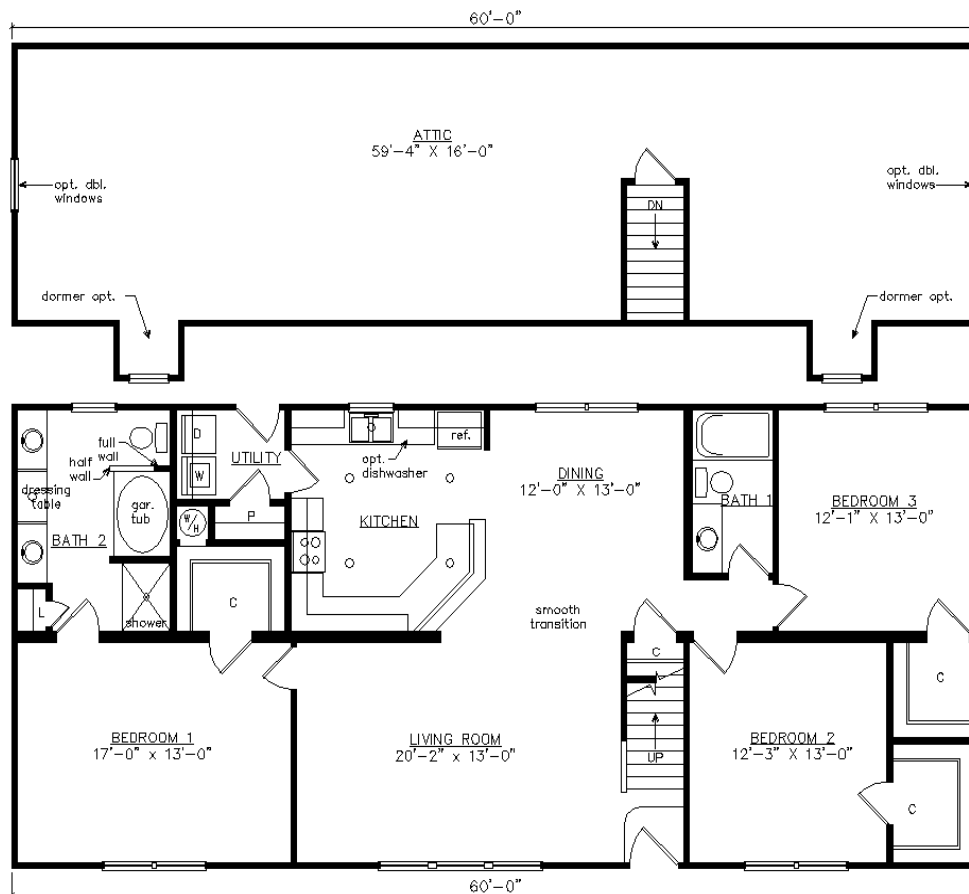


SHOWN WITH OPTIONAL
6" EXTERIOR WALLS

PARK AVENUE CAPE



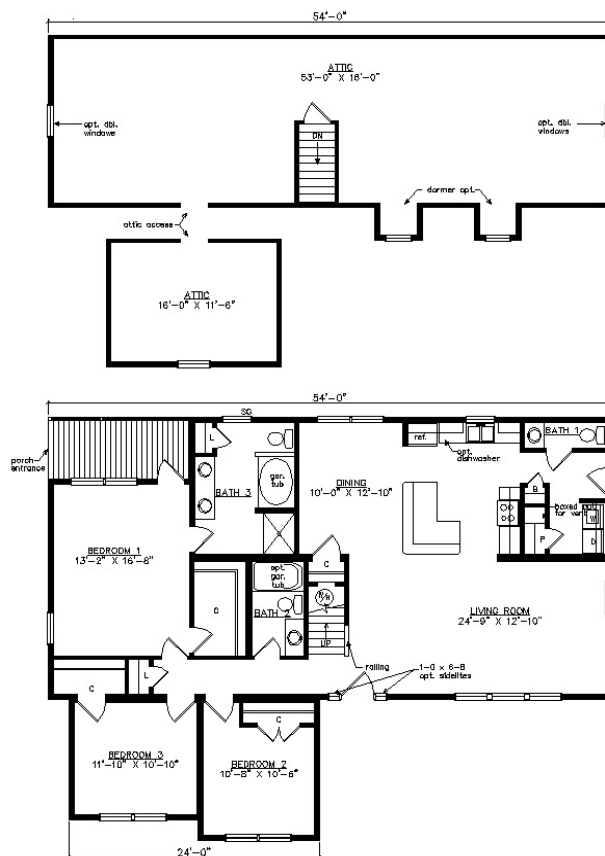
SHOWN WITH OPTIONAL ON SITE BUILT GABLE PORCH,
 DORMERS AND FANLITE DOOR
 1640 SQ. FT. (FINISHED) 1000 SQ. FT. (UNFINISHED) BEDROOMS: 3 BATHS: 2



DINWIDDIE CAPE



SHOWN WITH OPTIONAL SITE BUILT PORCH, TRIANGLE GABLE VENT,
 FANLITE DOOR, DOOR SIDELITES, AND DORMERS
 1779 Sq. Ft. (FINISHED W/PORCH) 1698 Sq. Ft. (FINISHED WITH OUT PORCH)
 1106 Sq.Ft. (UNFINISHED) BEDROOMS: 3 BATHS: 2.5



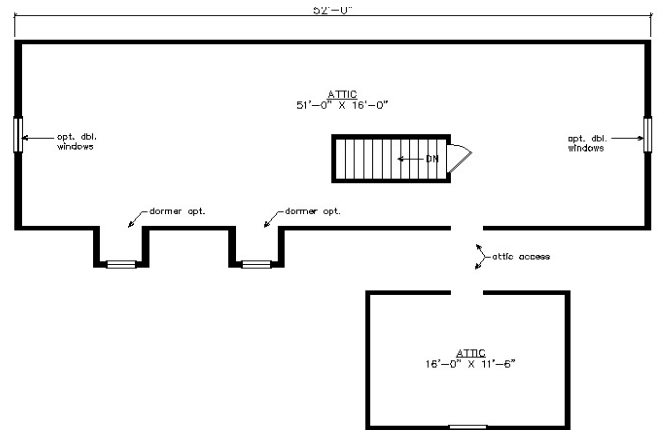
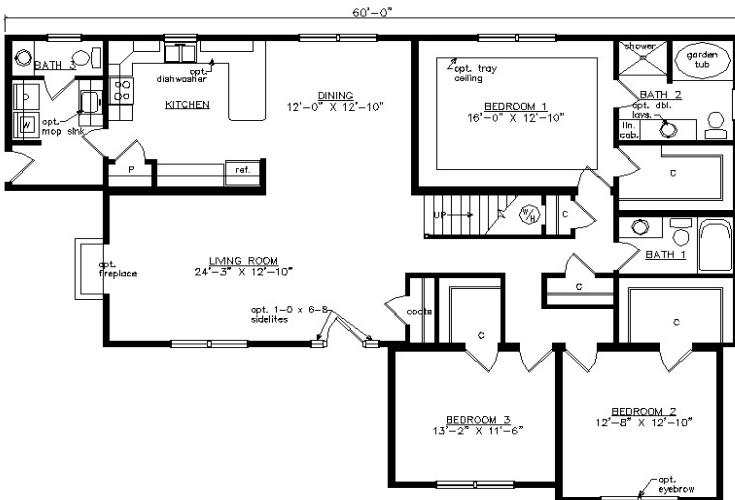
SHOWN WITH OPTIONAL
 6" EXTERIOR WALLS

WILMINGTON CAPE



SHOWN WITH OPTIONAL SITE BUILT PORCH, DOOR SIDELITES,
FANLITE DOOR AND DORMERS

1886 Sq. Ft. (FINISHED) 1008 Sq. Ft. (UNFINISHED) BEDROOMS: 3 BATHS: 2.5

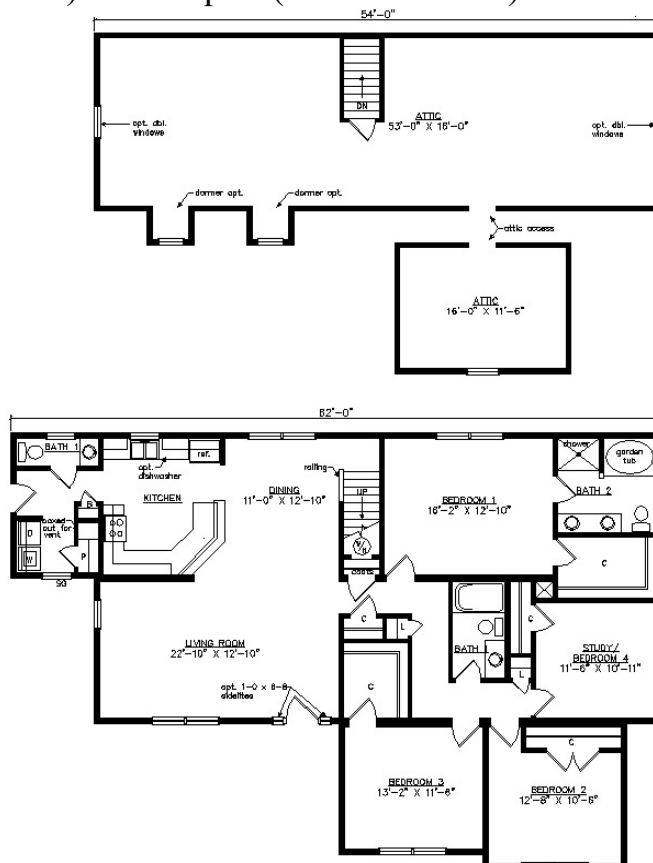


SHOWN WITH OPTIONAL
6" EXTERIOR WALLS

WILMINGTON I CAPE



SHOWN WITH OPTIONAL SITE BUILT PORCH, TRIANGLE GABLE VENT,
 DOOR SIDELITES, FANLITE DOOR AND DORMERS
 1941 Sq. Ft. (FINISHED) 1106 Sq.Ft. (UNFINISHED) BEDROOMS: 4 BATHS: 2.5

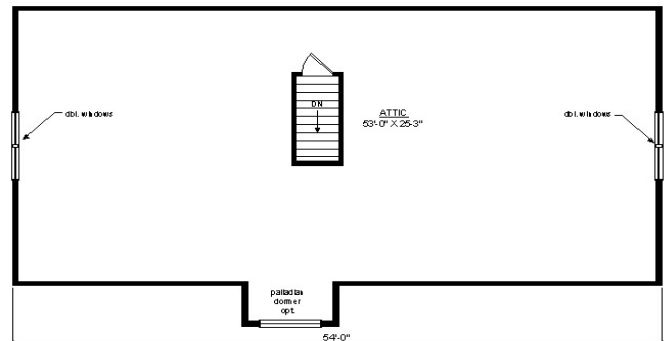
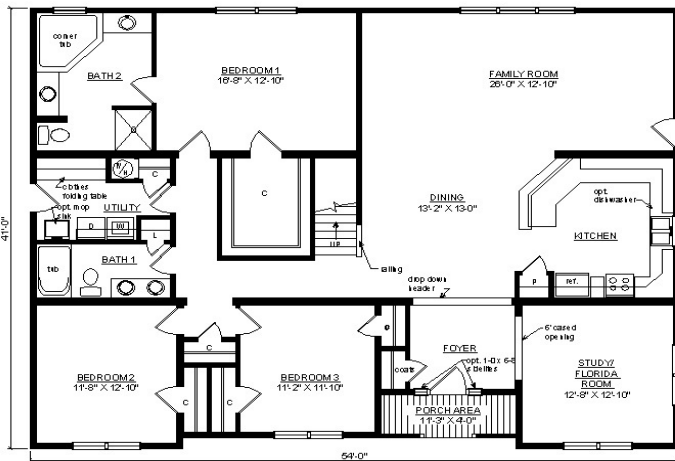


SHOWN WITH OPTIONAL
 6" EXTERIOR WALLS

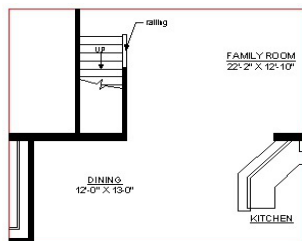
PORTSMOUTH CAPE



SHOWN WITH OPTIONAL FANLITE DOOR, DORMER AND TRIANGLE GABLE VENT
 2141 Sq. Ft. (FINISHED WITHOUT PORCH) 2186 Sq. Ft. (FINISHED WITH PORCH)
 1400 Sq.Ft. (UNFINISHED) BEDROOMS: 3 BATHS: 2



OPTION 2 (STAIR AREA)

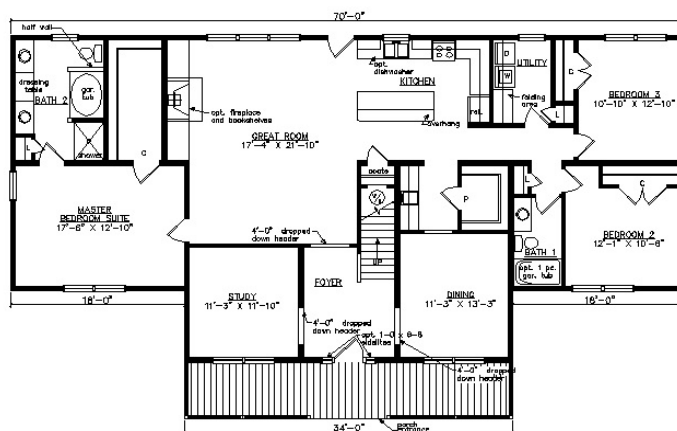
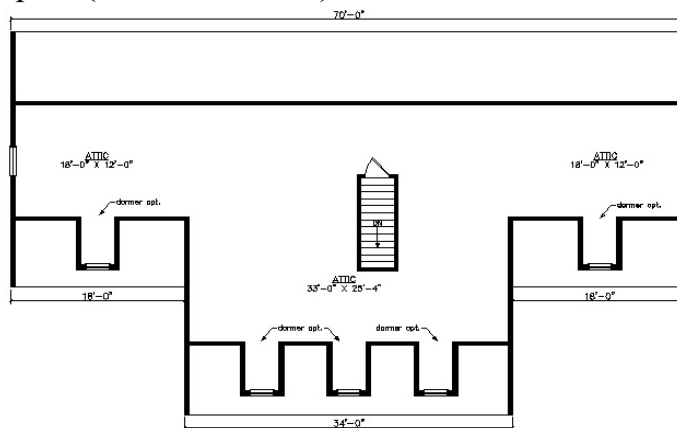


SHOWN WITH OPTIONAL
 6" EXTERIOR WALLS

SPOTSYLVANIA CAPE



SHOWN WITH OPTIONAL DOOR SIDELITES, FANLITE DOOR AND DORMERS
 2378 Sq. Ft. (FINISHED WITH PORCH) 2174 Sq. Ft. (FINISHED WITHOUT PORCH)
 1338 Sq.Ft. (UNFINISHED) BEDROOMS: 3 BATHS: 2

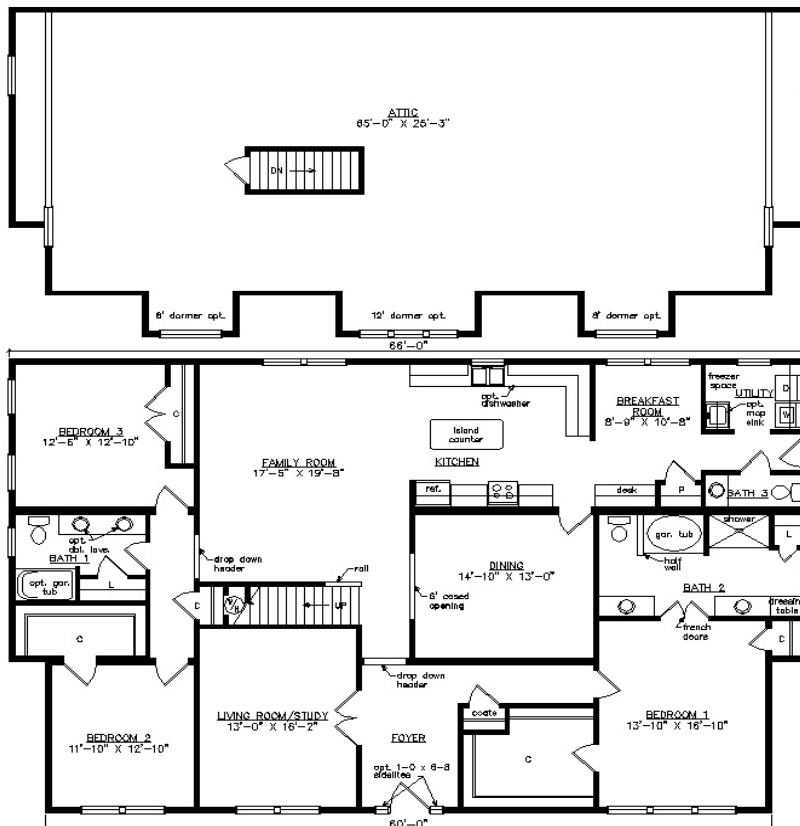


SHOWN WITH OPTIONAL
 6" EXTERIOR WALLS

HAMPTON CAPE



SHOWN WITH OPTIONAL ON SITE BUILT PORCH, FANLITE DOOR AND DORMER
2624 Sq. Ft. (FINISHED) 1629 Sq. Ft. (UNFINISHED) BEDROOMS: 3 BATHS: 2.5



SHOWN WITH OPTIONAL
6" EXTERIOR WALLS